



X - DX





Fontenay-sur-Eure



Carvin



Châteaubourg



La Conillais



Osasco





WE ARE energetic
PRECISION **ARE** efficiency
INDUSTRIAL
TECHNOLOGY

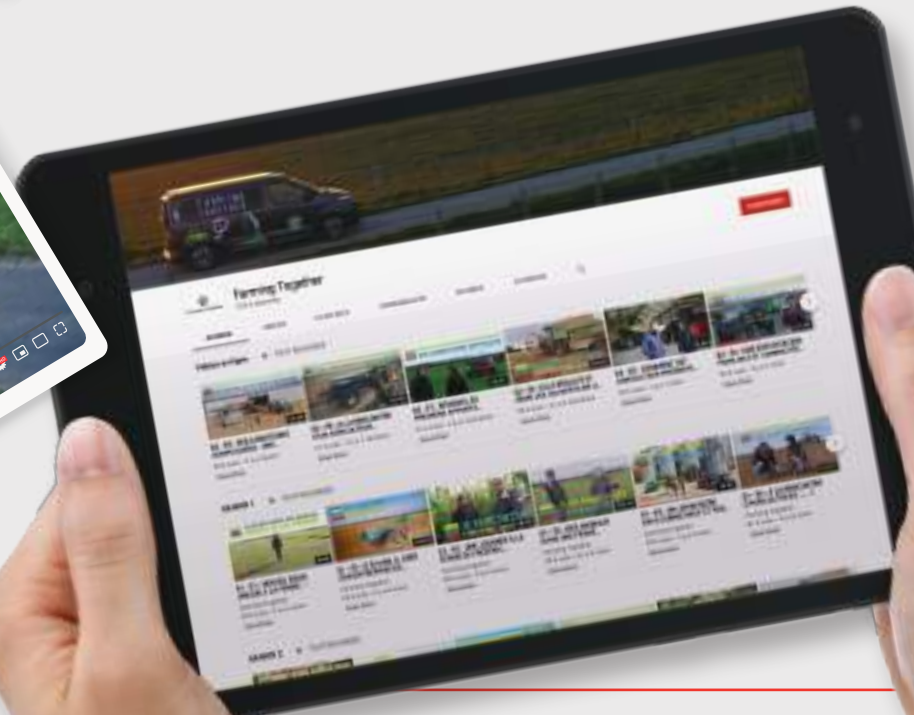
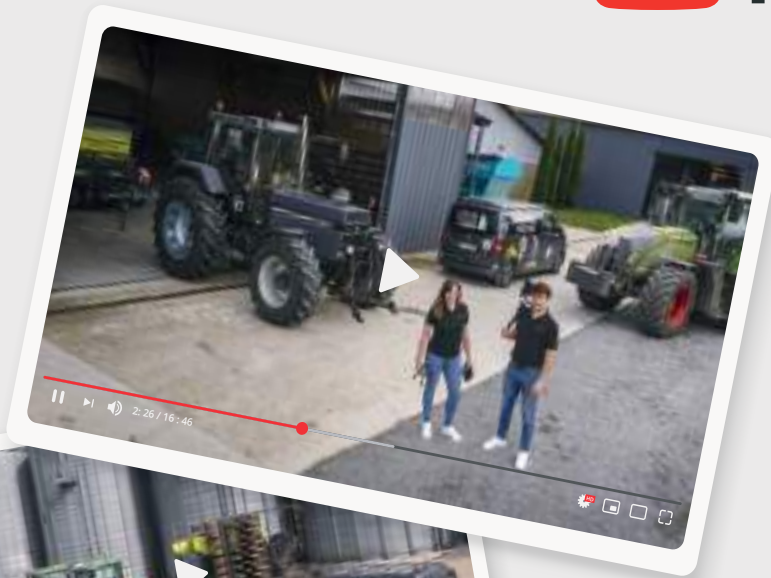




FARMING TOGETHER

Be positive about Agriculture

Positivez sur l'Agriculture





Softshell



Veste matelassée



farming-together.com





1959 - Sulky Rotor



1936 > 2023



310 000 ex.





FERTITEST



DX



DX20 (9-18m) / DX20+ (12-24m)
900L



DX20 (9-18m) / DX20+ (12-24m)
1500L



DX20+ (12-24m)
2100L

X



X40+ (12-44m)

2050L



X40+ (12-44m)

2650L



X40+ (12-44m)

3200L

XT



XT100
7200L / 10.0t



XT130
9500L / 12.5t

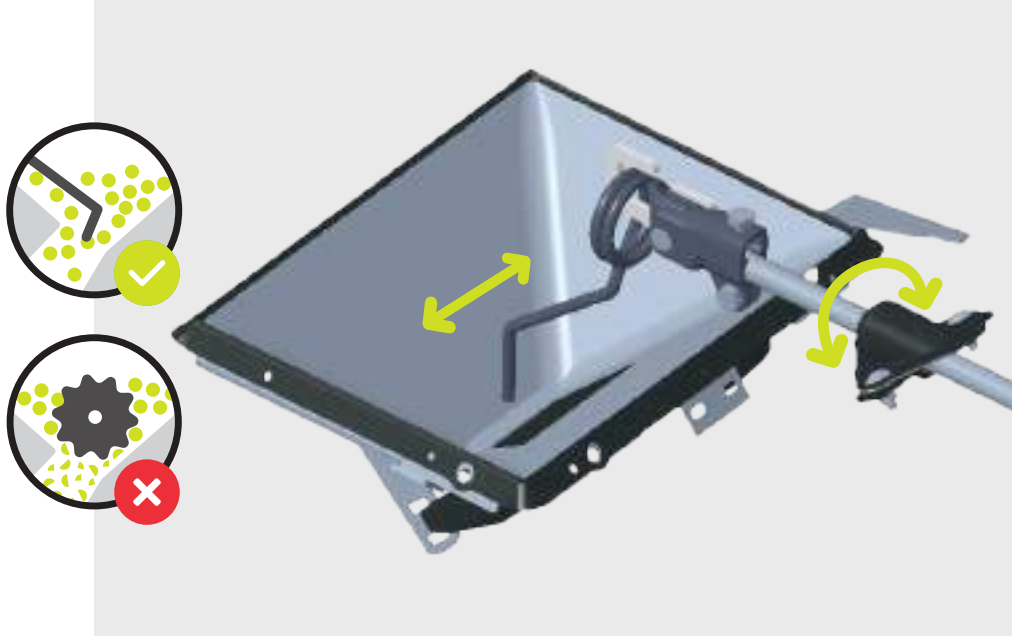
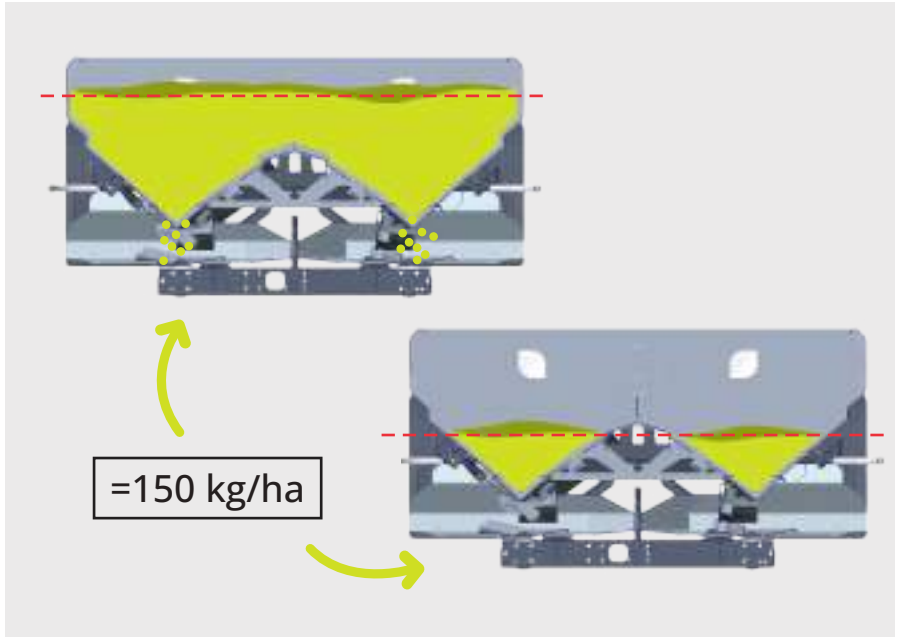
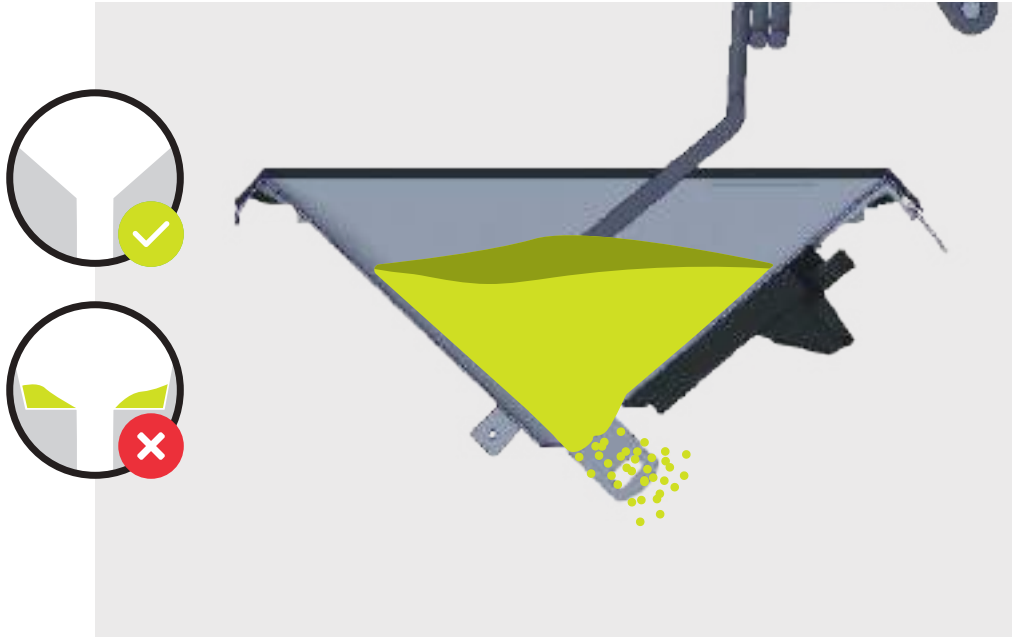


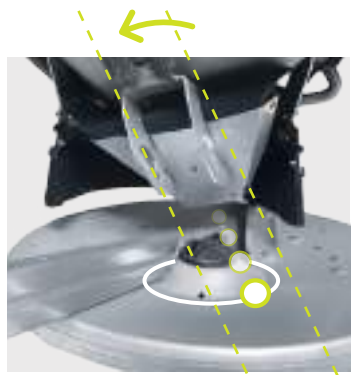
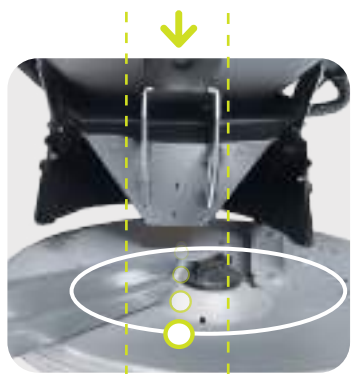
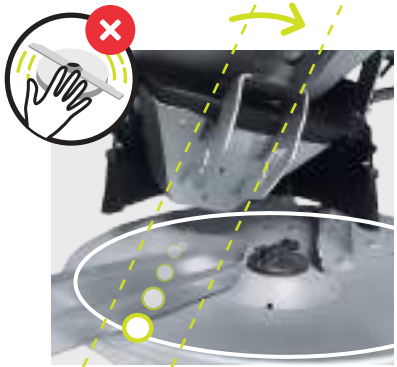
XT160
13000L / 15.9t









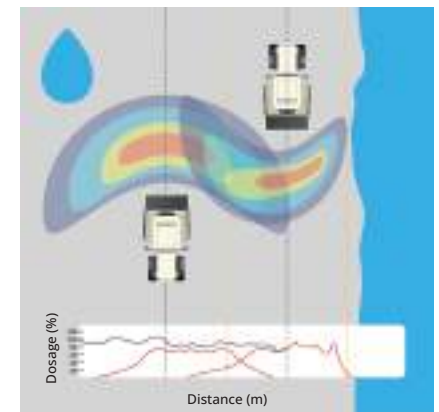
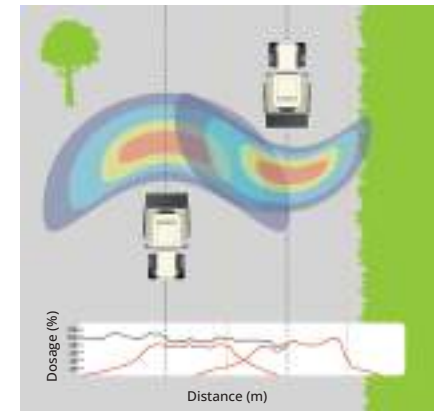
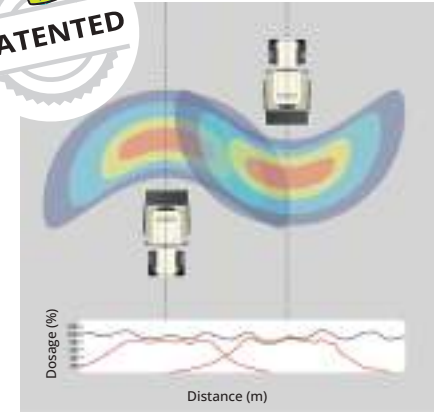


TRIBORD

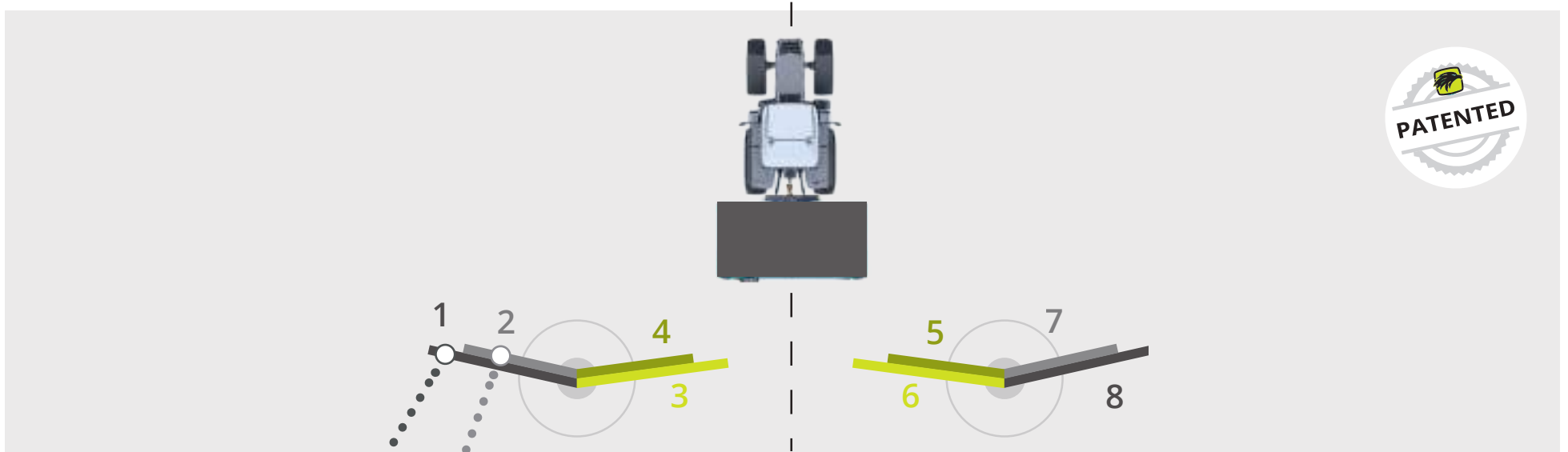


DX / DX+ 2D

X+ 3D

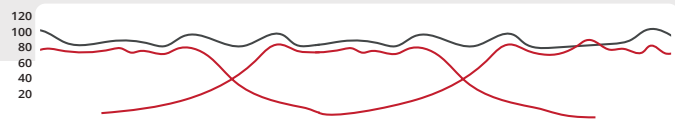
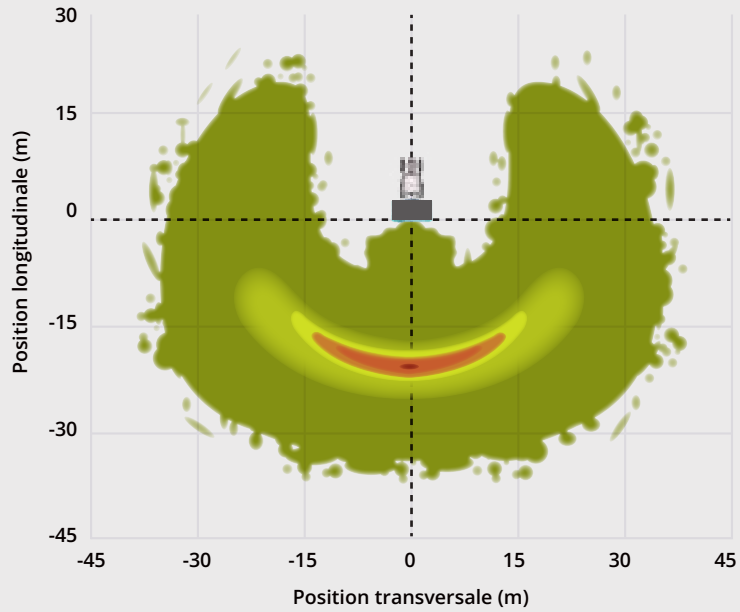
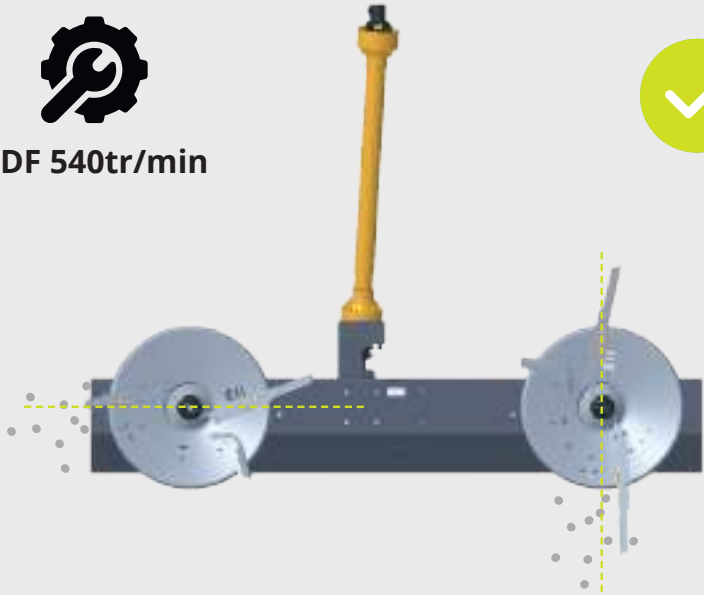




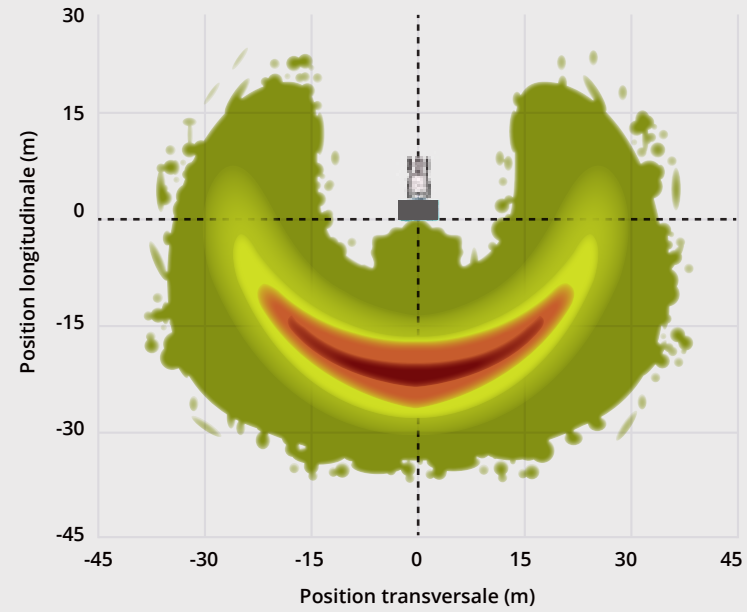
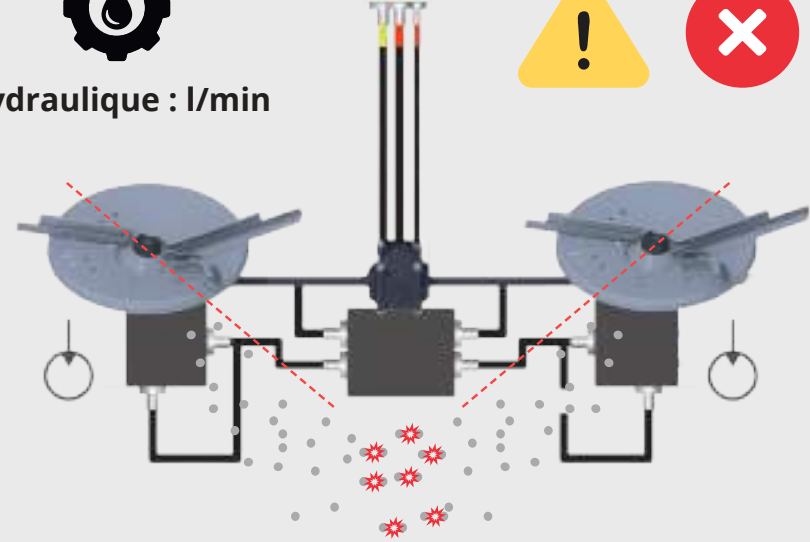




PDF 540tr/min











Hydraulique : l/min









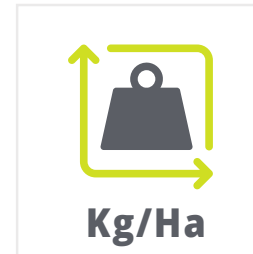
			 8 km/h	 12 km/h	
 < 24 m >		150 kg/ha	<i>48 kg/min</i>	<i>48 kg/min</i>	 <i>100 kg/ha</i>
		150 kg/ha	48 kg/min	72 kg/min	 150 kg/ha



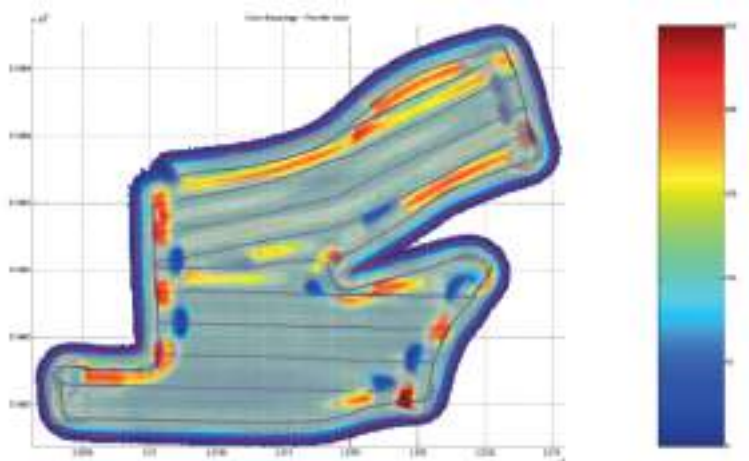
DX



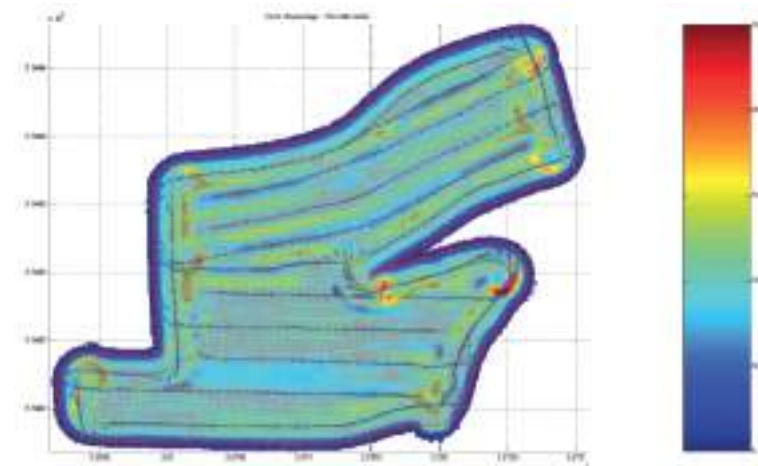
ECONOV



NO ECONOV ❌



ECONOV 6 ✅





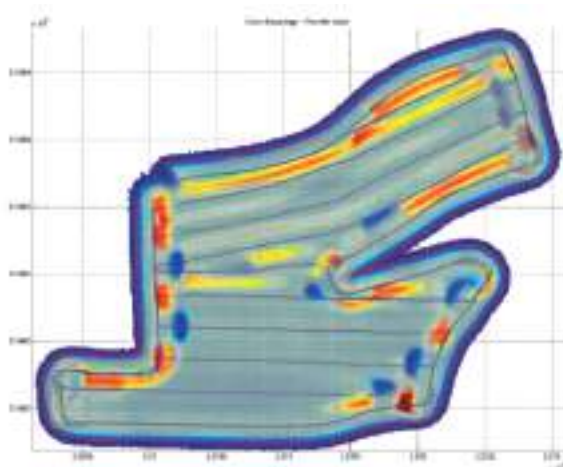
X



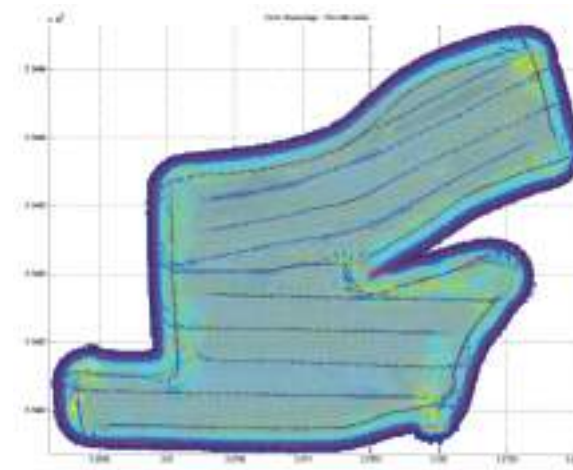
ECONOV

<p>Kg/Ha</p>		
--------------	--	--

NO ECONOV

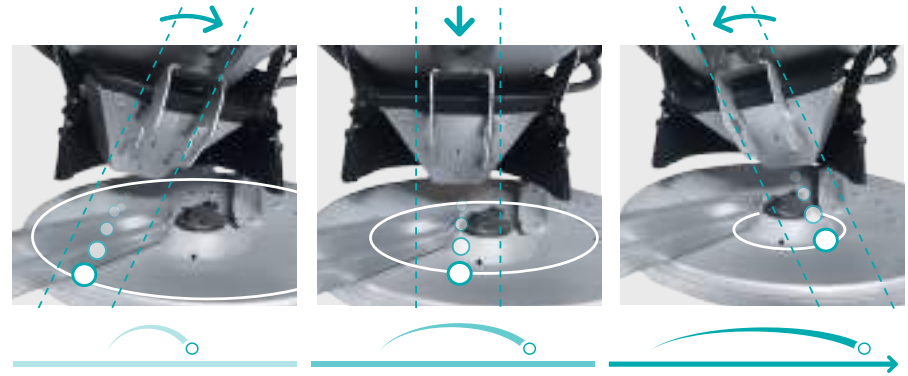
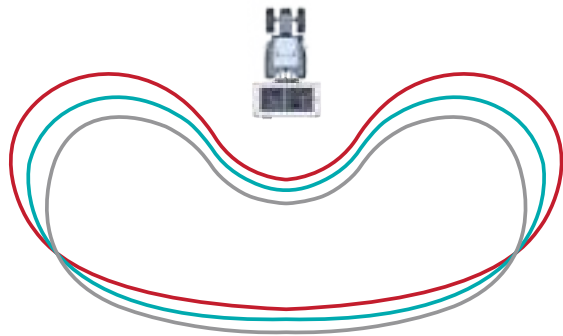


ECONOV 12

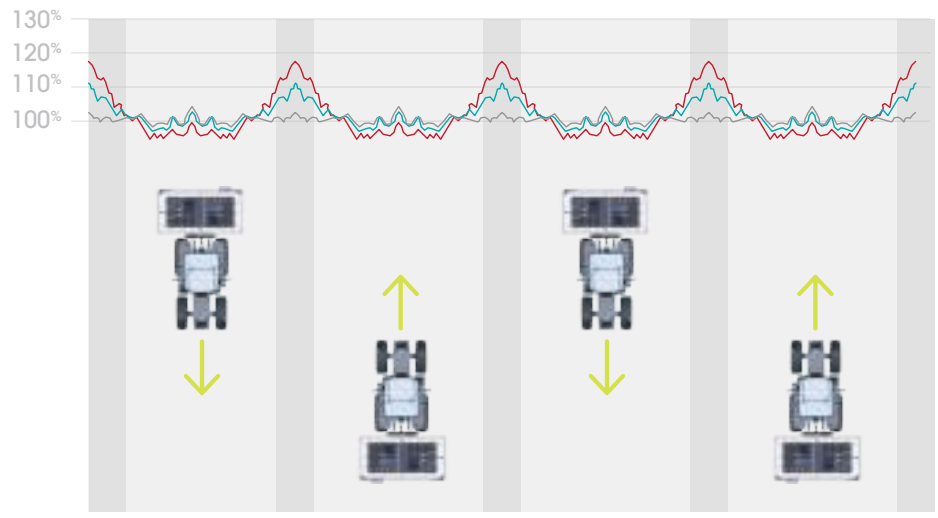




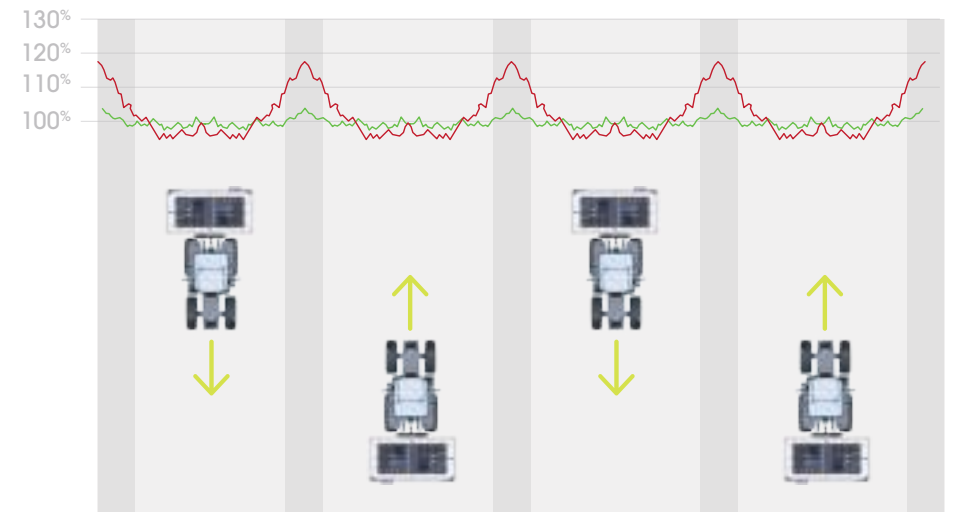
SPEED CONTROL



0 km/h 10 km/h 20 km/h

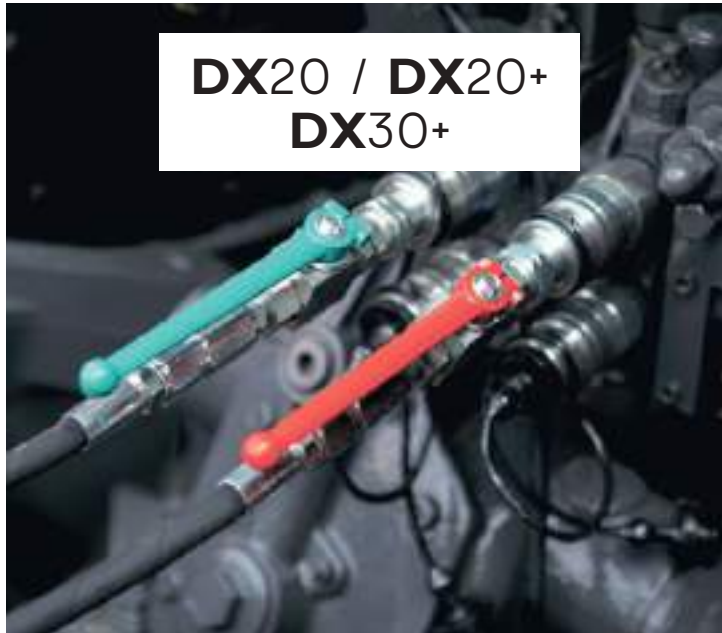


20 km/h 20 km/h SPEED CONTROL









DX20 / DX20+
DX30+



QUARTZ 600
WPB

DX30+
X40+



DX20 / DX20+
DX30+ / X40+



QUARTZ 800
WPB/ECONOV

DX30+
X40+
X50+



AEF Certified

ISO BUS

www.aef-isobus-database.org

UT	TECU	AUX-N
TC-BAS	TC-GE0	TC-SC
...

WPB/ECONOV

DX30+

X40+

X50+

























OPTIONS














DX

Type	DX 20		DX 20 ⁺			DX 30 ⁺			
 (m)	9 - 18		12 - 24			12 - 36			
 (kg)	1500		2100			3000			
 (L)	900	1500	900	1500	2100	1500	2150	2350	3000
  (m)	2.29		2.29			2.48		2.98	
  (m)	1.23 x 2.21		1.23 x 2.21			1.23 x 2.40		1.23 x 2.80	
  (m)	0.91	1.12	0.91	1.12	1.32	1.06	1.27	1.29	1.49
 (kg)	300	340	300	345	385	305	350	355	400

X⁺

Type	X 40 ⁺			X 50 ⁺		
 (m)	12 - 44			24 - 50		
 (kg)	3000			4000		
 (L)	1900 / 2050	2500 / 2650	3000 / 3200	2400 / 2600	3200 / 3400	4000 / 4200
  (m)	2.70		2.98	2.98		
  (m)	2.31		2.81	2.81		
  (m)	1.23	1.41	1.52	1.26	1.44	1.62
  (m)	1.17			1.17		
 (kg)	540	570	585	670	705	730





Châteaubourg

P.A. de la Gaultière
35220 Châteaubourg

Fontenay

21 Rue Jean Monnet
28630 Fontenay-sur-Eure

Carvin

Rue du Pont de Grès
62220 Carvin

Osasco

Via Garzigliana, 37
10060 Osasco TO, Italie

Ferme de la Conillais

Saint-Émilien-de-Blain
44130 Blain

📞 Tél : +33 (0)2 99 00 84 84

✉ contact@sky-agriculture.com

🌐 sky-agriculture.com